



INTEGRA REALTY RESOURCES

# IRR | AUSTIN

COMMERCIAL REAL ESTATE  
VALUATION & CONSULTING



28+

years serving Austin  
and other Texas markets

**IRR® — INTEGRA REALTY RESOURCES —**

provides world-class commercial real estate valuation and counseling services to both local and national top financial institutions, developers, corporations, law firms, and government agencies. As one of the largest independent property valuation and counseling firms in the United States, we provide our diverse array of clients the highly informed opinions and trusted expert advice needed to understand the value, use and feasibility of their real estate. ***IRR. Local expertise. Nationally.***

150+

appraisals completed  
annually

## RECENT APPRAISAL ASSIGNMENTS OF NOTABLE AND VARIED ASSETS

### Multifamily



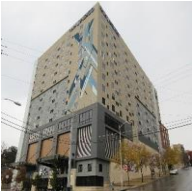
- **SkyHouse, 51 Rainey St., Austin, TX, 320 Units**
- Nexus East, 720 Airport Blvd., Austin, TX 352 units
- Chapel Hill Apartments, 401 Westinghouse Rd., Georgetown, TX 324 units
- Lifestyle Communities Pflugerville, 19447 Wilke Ln., Pflugerville, TX 409 Units
- Parque View (HUD, 223(f)), 1800 El Paso Street, Houston, TX 352 Units
- Culebra Crossing (HUD, 221(d)4), 75110 N Loop 1610, San Antonio, TX 336 Units

### Student Housing



- **21 Rio, 2101 Rio Grande St., Austin, TX 301 Beds, 4,063 SF Retail**
- Grand Marc, 510 W. 26<sup>th</sup> Street, Austin, TX 238 beds, 2,900 SF Retail
- Springtown Villa, 503 Springtown Way, San Marcos, TX 515 beds, 32,000 SF Retail
- Hilltop Student Housing, 1004 @ 24<sup>th</sup> Street, Austin, TX 505 beds

### Hospitality



- **Hotel Indigo, 810 Red River, Austin, TX 305 Rooms**
- Country Inn & Suites, 7400 N. IH 35, Austin, TX, 75 rooms
- Intown Suites Extended Stay, 12989 Research Blvd., Austin, TX, 152 rooms
- Uptown Suites, 7812 Clock Tower Drive, Austin, TX. 129 rooms
- Motel 6, 8010 N. Hwy 35, Austin, TX, 71 rooms
- Extended Stay America, 621 S. Staples, Corpus Christi, TX, 73 rooms

### Self-Storage



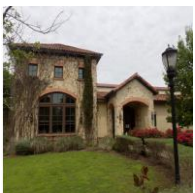
- **Solid Ground Self-Storage, 505 W. Hwy 290, Elgin, TX, 690 units**
- Life Storage, 4515 South Congress Ave., Austin, TX, 532 units
- Lakeway Storage, 513 N. Ranch Rd. 620, Austin, TX, 845 units
- Move It Self-Storage, 2225 CR 129, Pearland, TX, 475 units
- Lone Star Storage, 1079 N Earl Rudder, Bryan, TX, 693 units
- Morningstar Self-Storage, 10220 W. US Hwy 290, Austin, TX, 446 units

### Retail/Industrial



- **Shops on University, 1900 University Blvd, Round Rock, TX, 22,256 SF**
- Shops at Walden, 9800 N. Lake Creek Parkway, Austin, TX, 21,046 SF
- Picadilly Business Park, 16800 Joe Barbee Dr., Pflugerville, TX, 35,439 SF
- Vxchange Data Center, 8025 N. Hwy 35, Austin, TX, 62,237 SF
- 4400 Supply Court, Austin, TX, 35,000 SF
- Hwy 29 Industrial, 5050 & 5070 E. Hwy 29, Georgetown, TX, 42,000 SF

### Specialty Assignments



- **Dutchman Family Winery, 13308 FM 150, Driftwood, TX, 49,332 SF**
- Beerburg Brewing, 13476 Fitzhugh Rd., Austin, TX, 10,000 SF
- Unplugged Brewery, 7211 Albert Rd., Austin, TX, 8,390 SF
- Alpha Chi Omega, 1505 Olympia Way, College Station, TX, 40 beds
- Pi Phi Sorority House, 2300 San Antonio, TX, 37 beds
- Alpha Xi Delta Greek Housing, 2508 Rio Grande St., Austin, TX

## OUR VALUE PROPOSITION

Integra Realty Resources – Austin has been providing real estate valuation and consulting services for over 28 years in Austin and other markets throughout Texas. Our services are utilized for lending, property acquisition, property disposition, bankruptcy, estate planning, IRS tax reporting, litigation, eminent domain, infrastructure planning, market studies, feasibility studies, rent studies, and other unique situations where trusted real estate valuation and/or consulting expertise is imperative. Several members of our team are qualified as expert witnesses who have testified in various county, district, state, and federal courts.



### **Todd Rotholz, MAI, Senior Managing Director**

Todd Rotholz, MAI is Senior Managing Director for Integra Realty Resources – Houston. He has been exclusively engaged in commercial real estate valuation and consultation since 1993. Mr. Rotholz has a diverse range of experience in appraising most types of real estate including, but not limited to, single and multi-tenant retail, single and multi-tenant industrial distribution, flex, and manufacturing, multi-family, mixed-use and planned unit developments, residential subdivisions, CBD and suburban office buildings, and a variety of special purpose properties. He is also actively engaged in appraisals for condemnation and right-of-way purposes, tax appeals, estate valuations, and litigation support, and is qualified as an expert witness. Clients include banks and other financial institutions, law firms, government entities, developers, and investors.



### **Edward Schulz, MAI, SRA, Executive Director**

Edward B. Schulz, MAI, SRA is Executive Director for Integra Realty Resources – Houston. He has been exclusively engaged in commercial real estate valuation and consultation since 1971. Mr. Schulz has a diverse range of experience in appraising most types of real estate including commercial, industrial, special purpose, vacant land, and residential properties. He has also been a consultant on numerous real estate transactions, and is qualified as an expert witness. Clients include banks and other financial institutions, law firms, government entities, developers, and investors.



### **Michael Welch, SR/WA, R/W-AC, MRICS, Managing Director**

Mr. Welch has been involved in the Real Estate appraisal and consulting field for more than 30 years and is known nationally for his expertise involving large-scale infrastructure projects. He has conducted initial route studies, cost analysis, impact studies and valuations for more than 2,500 miles of linear projects including pipelines, electrical transmission lines, rail corridors, drainage facilities and major transportation roadways. Additionally, Mr. Welch has been involved in appraisal matters, consulting and project management in all 50 states and in more than 150 Texas counties. He has provided litigation services and expert witness testimony for properties involved in various county courts of law, district, state and federal courts.



### **Jeffery Cusick, Managing Director**

Jeffery S. Cusick is the Managing Director for Integra Realty Resources – Austin. He has been exclusively engaged in commercial real estate valuation and consultation since 2003 within the Central Texas market. Mr. Cusick has a wide range of experience in appraising and consulting on most types of commercial properties, including retail, office, multifamily, self-storage, industrial and land. Mr. Cusick specializes in multifamily, including, but not limited to, student-oriented housing, suburban and luxury high-rise complexes, LIHTC, and HUD-MAP projects both proposed and existing. Clients served include banks, and financial institutions, mortgage bankers, developers, investors, law firms, business/industry and government agencies.



## OUR CLIENTS

### Law Firms/Accounting

### Mortgage Banks/Services

- Allegiance Bank
- BBVA
- Bancorp South
- Bank of America
- Bank of the Ozarks
- BB&T
- Business First Bank
- Cadence Bank
- Capstone Bank
- CCB Community Bank
- Capital One Bank
- Citizens State Bank
- City National Bank
- CoBiz Bank
- Comerica Bank
- Community Bank of Texas
- East West Bank
- Enterprise Bank & Trust
- First Citizens Bank
- First Commercial Bank
- First National Bank of Central Texas
- The First State Bank of Louise
- Frost Bank
- Golden Bank
- Guaranty Bank & Trust
- Huntington State Bank
- Iberia Bank
- Independent Bank
- International Bank of Commerce
- JP Morgan Chase Bank
- Keystone Bank
- Lone Star Bank, SSB
- New First National Bank
- Origin Bank
- Peoples State Bank
- Pilgrim Bank
- Plains State Bank
- Pinnacle Bank
- PNC Bank
- Prosperity Bank
- Regions Bank
- ServisFirst Bank
- Simmons Bank
- Smart Bank
- Southside Bank
- Southstar Bank
- Sovereign Bank
- TD Bank
- Texas Community Bank
- Texas Exchange Bank
- Veritex
- Wells Fargo Bank RETECHS
- Woodforest National Bank

- Briggs & Veselka
- Carter Morris LLP
- Davis/Chambers & Co, Ltd.
- Edison, McDowell & Hetherington LLP
- Friedman LLP
- Fullenweider Wilhite
- Gray Reed & McGraw
- Haynes and Boone, LLP
- Jackson Walker, LLP
- Jenkins & Kamin, LLP
- LaFour Law Firm PC
- McFarland PLLC
- Nance & Simpson, LLP
- Popp Hutcheson PLLC
- Porter Hedges, LLP
- Ridout & Associates
- Sanford Kuhl Hagen Kugle Parker Kahn LLP
- Schwartz Page & Harding, LLP
- Singleton Cooksey PLLC
- Strategic Valuation Group LLP
- Thomson & Knight
- The Travis Law Firm P.C.
- Van Kerrebroek & Associates P.C.

- Arthur J Gallagher & Co.
- Avison Young
- Berkadia
- Business Alliance Financial Services LLC
- Dart Appraisal
- Haginas & Shillings
- Heartland Valuation Services LLC
- Holliday Fenoglio Fowler, LP
- Investors Title Insurance
- Legacy Trust Company
- Mutual of Omaha
- Redstone
- Texas Appraisal Management Review
- The Greystone Group
- Trinity Real Estate Finance

### Government & Organizations

- City of Austin
- Austin Energy
- University of Texas System
- TXDOT

### Developers/Owners

- Buchalter Company, Inc.
- Freeway Properties
- GHH Real Estate Services LLC
- Greystar Management Services, L.P.
- Landmarks Industries
- Lone Star Constructions
- Lusk Properties, Inc.
- McLane Companies
- Mission Management Companies
- Moody Rambin Interest
- Oakmont Group, Inc.
- Pin Point Commercial
- Poarch-Swinbank
- Savills Studley
- CMSmith Interests



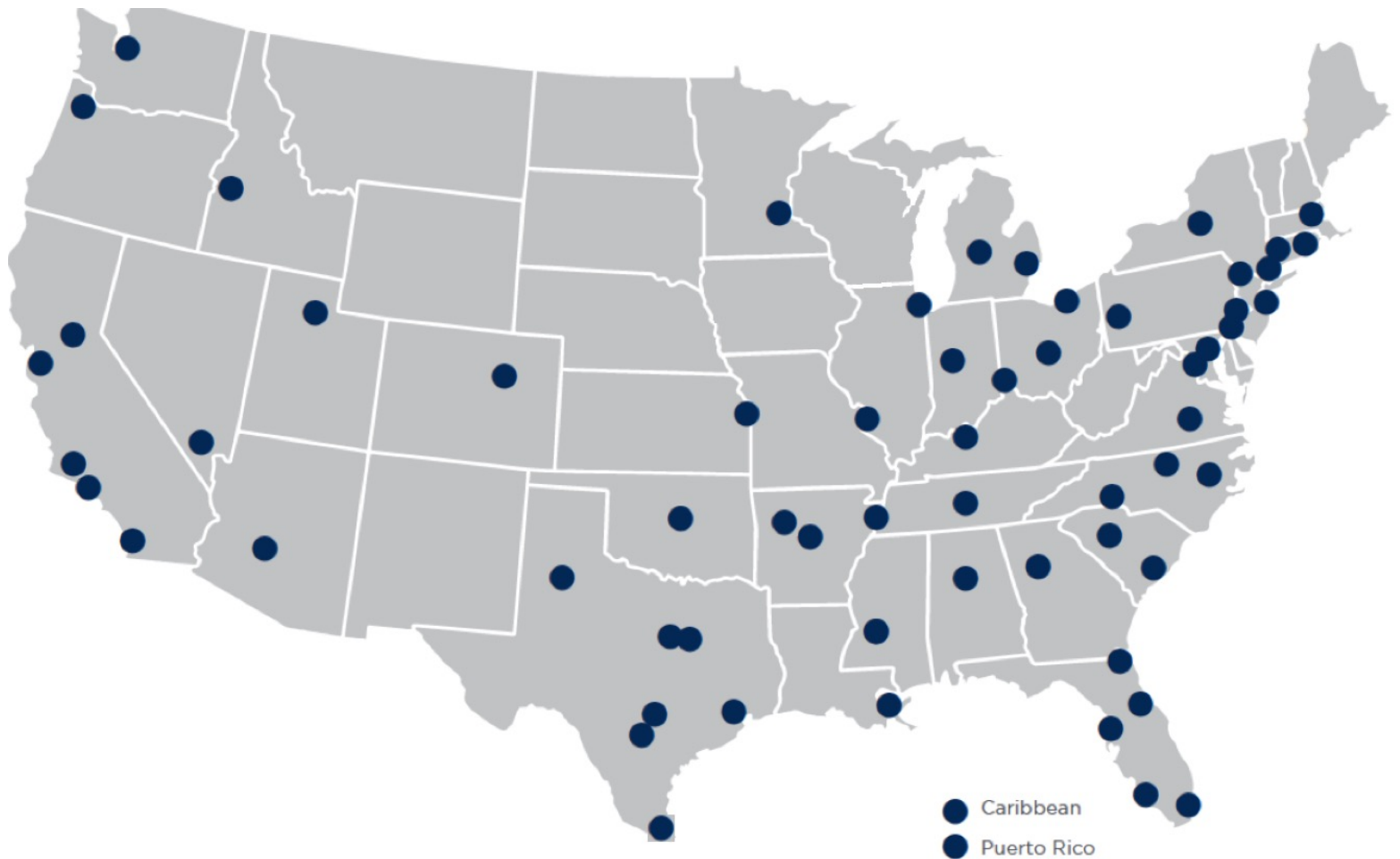
LOCAL EXPERTISE. NATIONALLY.

50+

local offices

60+

markets covered U.S. and Caribbean



## NORTHEAST OFFICES

### CONNECTICUT

Hartford, CT  
Todd Isaacson, MAI  
T (860) 291-8997 ext. 19  
tisaacson@irr.com

### NEW JERSEY

Coastal New Jersey  
Halvor J. Egeland, MAI  
T (732) 244-7000 ext. 103  
hegeland@irr.com

Northern New Jersey  
Paul T. Beisser, CRE, MAI, SCGRE  
T (973) 422-9800  
pbeisser@irr.com

### NEW YORK

Syracuse, NY  
William J. Kimball, MAI, FRICS  
T (315) 422-5577  
wkimball@irr.com

### PENNSYLVANIA

Philadelphia, PA  
Raja P. Waran, MAI  
T (908) 420-9797  
rwaran@irr.com

Pittsburgh, PA  
Brian Kelly, MAI, SRA  
T (412) 683-2211  
bkelly@irr.com

### RHODE ISLAND

Providence, RI  
Todd Isaacson, MAI  
T (860) 291-8997 ext. 19  
tisaacson@irr.com

## SOUTHEAST OFFICES

### ALABAMA

Birmingham, AL  
Rusty Rich, MAI, MRICS  
T (205) 949-5995  
rrich@irr.com

### FLORIDA

Miami | Caribbean  
James Andrews, MAI, CRE, FRICS, ASA/BV  
T (305) 670-0001 ext. 320  
jandrews@irr.com

Orlando, FL  
Christopher D. Starkey, MAI  
T (407) 843-3377 ext. 112  
cstarkey@irr.com

Southwest Florida  
Carlton J. Lloyd, MAI  
T (239) 687-5801  
clloyd@irr.com

Tampa, FL  
Kendra Stevens Barry  
T (813) 287-1000 ext. 110  
kbarry@irr.com

### GEORGIA

Atlanta, GA  
Matthew Albigese, MAI  
T (404) 418-4358 ext. 1000  
malbigese@irr.com

### NORTH CAROLINA

Charlotte, NC  
John D. Scott, Jr., MAI, MRICS  
T (704) 206-8258  
jscott@irr.com

Greensboro, NC  
Nancy B. Tritt, MAI, SRA, FRICS  
T (336) 676-6033  
ntritt@irr.com

Raleigh, NC  
Chris R. Morris, MAI, FRICS  
T (919) 847-1717  
cmorris@irr.com

### SOUTH CAROLINA

Charleston, SC  
Cleveland "Bud" Wright, Jr., MAI  
T (843) 718-2125 ext. 10  
cwright@irr.com

Columbia, SC  
Michael B. Dodds, MAI, CCIM  
T (803) 772-8282 ext. 110  
mdodds@irr.com

### TENNESSEE

Nashville, TN  
Paul Perutelli, MAI, SRA, FRICS  
T (615) 628-8275 ext. 1  
pperutelli@irr.com

### VIRGINIA

Richmond, VA  
Kenneth L. Brown, MAI, FRICS, CCIM  
T (804) 346-2600 ext. 209  
kbrown@irr.com

## CENTRAL OFFICES

### ILLINOIS

Chicago, IL  
Ron DeVries, MAI, FRICS  
T (312) 565-3432  
rdevries@irr.com

### INDIANA

Indianapolis, IN  
Michael Lady, MAI, SRA, ASA, CCIM, FRICS  
T (317) 546-4720  
mlady@irr.com

### KENTUCKY

Louisville, KY  
Stacey S. Nicholas, MAI, MRICS  
T (502) 452-1543 ext. 3774  
snicholas@irr.com

### MICHIGAN

Detroit, MI  
Donald L. Selvidge, MAI  
T (248) 540-0040 ext. 114  
dselvidge@irr.com

Grand Rapids, MI  
Jeff Genzink, MAI  
T (616) 261-5000  
jgenzink@irr.com

### MINNESOTA

Minneapolis/St. Paul, MN  
Michael Amundson, MAI, CCIM  
T (952) 905-2401  
mamundson@irr.com

### MISSOURI

Kansas City, MO  
Brock A. Heyde, MAI  
T (816) 652-0222  
bheyde@irr.com

St. Louis, MO  
Timothy M. Schoemehl, MAI  
T (636) 898-6533  
tschoemehl@irr.com

### OHIO

Cincinnati/Dayton, OH  
Gary S. Wright, MAI, FRICS, SRA  
T (513) 426-7125  
gwright@irr.com

Cleveland, OH  
Douglas P. Sloan, MAI  
T (330) 659-3640 ext. 101  
dsloan@irr.com

Columbus, OH  
Brad A. Johnson, MAI  
T (614) 398-4307  
bajohnson@irr.com

## SOUTHWEST OFFICES

### ARIZONA

Phoenix, AZ  
Walter "Tres" Winium, III, MAI, FRICS  
T (602) 266-5599  
twinium@irr.com

### OKLAHOMA

Oklahoma City, OK  
Richard Cole, Jr., MAI  
T (405) 422-0718 ext. 2  
richard.cole@irr.com

### TEXAS

Austin, TX  
Todd Rotholz, MAI  
T (713) 973-0212 ext. 12  
trotholz@irr.com

Dallas, TX  
Jimmy H. Jackson, MAI  
T (972) 725-7724  
jhjackson@irr.com

Ft. Worth, TX  
Alan Pursley, MAI, SRPA, SRA, SGA  
T (817) 763-8023  
apursley@irr.com

Houston, TX  
Todd Rotholz, MAI  
T (713) 973-0212 ext. 12  
trotholz@irr.com

Lubbock, TX  
Taylor Carmona  
T (409) 656-5199  
taylor.carmona@irr.com

San Antonio, TX  
Brandon Brehm, MAI, CCIM  
T (210) 446-4444  
bbrehm@irr.com

## WEST OFFICES

### CALIFORNIA

Los Angeles, CA  
John G. Ellis, MAI, CRE, FRICS  
T (818) 290-5444  
jellis@irr.com

Orange County  
J. Richard Donahue, MAI  
T (714) 665-6515  
rdonahue@irr.com

Sacramento, CA  
Kevin Ziegenmeyer, MAI  
T (916) 435-3883 ext. 224  
kziegenmeyer@irr.com

San Diego, CA  
John A. Morgan, MAI  
T (858) 259-4900 ext. 315  
jmorgan@irr.com

San Francisco, CA  
Jeffrey Fillmore, MAI  
T (408) 299-0444  
jfillmore@irr.com

### COLORADO

Denver, CO  
Larry B. Close, MAI  
T (720) 833-5931  
lclose@irr.com

### IDAHO

Boise, ID  
Bradford Knipe, MAI, ARA, CRE, CCIM, FRICS  
T (208) 472-3200  
bknipe@irr.com

### NEVADA

Las Vegas, NV  
Charles E. Jack, IV, MAI  
T (702) 906-0480  
cjack@irr.com

### UTAH

Salt Lake City, UT  
John T. Blanck, MAI, MRICS  
T (801) 263-9700 ext. 109  
jblanck@irr.com

### WASHINGTON

Seattle, WA  
Matthew A. Bacon, MAI  
T (206) 436-1179  
mbacon@irr.com

## CARIBBEAN

Caribbean  
James Andrews, MAI, CRE, FRICS, ASA/BV  
T (844) 952-7604 ext. 402  
jandrews@irr.com

Puerto Rico  
Carlos Vélez, MAI, SRA, BCA, CMEA, CCIM, MRICS  
T (787) 782-4974  
cvelez@irr.com

**INTEGRA REALTY RESOURCES - AUSTIN**

100 Congress Avenue, Suite 200  
Austin, Texas 78701  
T: (512)-924-1345  
irr.com/Austin

Todd Rotholz, MAI  
Senior Managing Director  
T (713) 973-0212 x 12  
trotholz@irr.com

Jeffery Cusick  
Managing Director  
T (512) 924-1345  
jcusick@irr.com

irr.com

Visit us online to learn more  
and access our extensive  
research library.



INTEGRA REALTY RESOURCES  
Local Expertise. Nationally.